



# TIRE CHANGER

ACCESSORY  
CATALOG

# INDEX

|                                  |       |
|----------------------------------|-------|
| ▶ PRECISION TOOLING KITS         | 3     |
| ▶ REDUCTION CONES                | 4     |
| ▶ BEAD BREAKING                  | 4-5   |
| ▶ TIRE LEVERS                    | 6     |
| ▶ TIRE MOUNTING                  | 6-8   |
| ▶ M/D HEADS & ACCESSORIES        | 8-10  |
| ▶ CLAMPING ADAPTERS & PROTECTORS | 10-12 |
| ▶ ACCESSORIES                    | 12    |
| ▶ HEAVY-DUTY                     | 13    |

**UNIVERSAL REVERSE MOUNT WHEEL KIT**

**EAA0364G00A**

COMPATIBLE MODELS

- T7800
- T7700



» Replacement Knob C0028

DETAILS

- » (5) Cylindrical pins 24mm
- » (5) Conical pins 24mm
- » Used with small steel cone EAM0003J05A
- » Replacement Bolt 2401414

**REVERSE MOUNT WHEEL KIT**

**EAA0351G60A**

COMPATIBLE MODELS

- T7100



DETAILS

- » (5) Cylindrical pins 24mm
- » (5) Conical pins 24mm
- » Replacement Bolt 2401414
- » Replacement Knob C0028

**CYLINDRICAL PIN**

**3003777**

COMPATIBLE MODELS

- EAA0364G00A
- EAA0351G60A



DETAILS

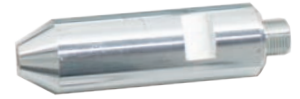
- » Replacement pin 24mm for reverse mount wheel kit
- » 89mm length

**CONICAL PIN**

**3003776**

COMPATIBLE MODELS

- EAA0364G00A
- EAA0351G60A



DETAILS

- » Replacement pin 24mm for reverse mount wheel kit
- » 78mm length

**CONICAL PINS**

**EAA0440G50A**

COMPATIBLE MODELS

- EAA0351G60A
- EAA0364G00A



DETAILS

- » Set of 5 pins
- » 19mm diameter
- » 110mm length

**PLASTIC PIN CAPS**

**EAK0375G50A**

COMPATIBLE MODELS

- EAA0364G00A
- EAA0351G60A



DETAILS

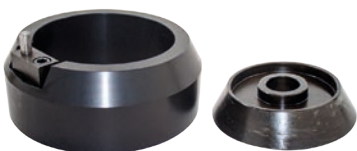
- » (15) Plastic pin caps for reverse-mount wheel kit

**LIGHT TRUCK WHEEL KIT**

**EAA0349G06A**

COMPATIBLE MODELS

- T7800
- T7700
- T7100



DETAILS

- » Cone Ø 135-175mm EAM0042G77A
- » Spacer 85mm height EAA0345G69A

**LIGHT TRUCK WHEEL KIT**

**EAA0351G29A**

COMPATIBLE MODELS

- T7800
- T7700
- T7100



DETAILS

- » Cone Ø 118-173mm EAM0067G48A
- » Spacer 50mm height EAA0350G77A

## REDUCTION CONE

**EAM0058G12A**

COMPATIBLE MODELS

- T7800
- T7700
- T7100



DETAILS

» Cone Ø 64mm

## REDUCTION CONE

**EAM0058G07A**

COMPATIBLE MODELS

- T7800
- T7700
- T7100



DETAILS

» Cone Ø 78mm

## REDUCTION CONE

**EAC0099G40A**

COMPATIBLE MODELS

- T7800
- T7700
- T7100



DETAILS

» Cone Ø 120mm

## REDUCTION CONE

**EAC0102G25A**

COMPATIBLE MODELS

- T7800
- T7700
- T7100



DETAILS

» Cone Ø 145mm

## CONE KIT

**EAK0317G32A**

COMPATIBLE MODELS

- T7800
- T7700



DETAILS

» Cone Ø 42-85mm

» (1) Steel Cone EAM0117G47A

» (3) Plastic Protectors EAC0100G66A

## SPACER FOR BEAD BREAKER - 20MM

**EAA0440G51A**

COMPATIBLE MODELS

- All Tire Changers



DETAILS

» 20mm Spacer

## SPACER FOR BEAD BREAKER - 50MM

**EAA0440G52A**

COMPATIBLE MODELS

- All Tire Changers



DETAILS

» 50mm Spacer

## SPACER FOR BEAD BREAKER - 70MM

**EAA0440G53A**

COMPATIBLE MODELS

- All Tire Changers



DETAILS

» 70mm Spacer

**BEAD BREAKER BLADE PROTECTOR**

**ST0026582**

COMPATIBLE MODELS

- All Rim Clamping Tire Changers



DETAILS

**BEAD BREAKER BLADE PROTECTOR**

**EAA0304G15A**

COMPATIBLE MODELS

- All Rim Clamping Tire Changers



DETAILS

**SLIP-ON SHOE**

**EAA0329G74A**

COMPATIBLE MODELS

- System V / T5745T
- System IV
- System III / T1545T
- System II



DETAILS

- » Reduces gap between bead breaker blade and rubber pad

**MOTORCYCLE BEAD BREAKER BLADE**

**EAA0247G14A**

COMPATIBLE MODELS

- System IV
- System III / T1545T
- System II



DETAILS

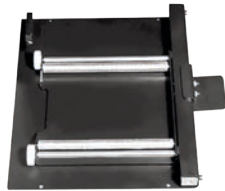
- » Narrower than standard blade
- » Slips on the bead breaker blade

**ROLLER BOARD**

**EAA0304G51A**

COMPATIBLE MODELS

- System V / T5745T
- System IV
- System III / T1545T
- System II



DETAILS

- » Allows for easy rotation of the tire for positioning of breaking beads

**BEAD BREAKER DISC**

**EAA0328G91A**

COMPATIBLE MODELS

- EAA0329G35B - MH320



DETAILS

- » Used only with Pneumatic Bead Assist
- » Used with Hex Bar EAA0329G92A

**POWERMONT™ UPPER PROTECTOR**

**EAK0341G32A**

COMPATIBLE MODELS

- T7800
- T7700



DETAILS

- » (10) Upper Tool Protector
- » EAK0330G57A for units manufactured before March 2019

**POWERMONT™ LOWER PROTECTOR**

**EAK0330G58A**

COMPATIBLE MODELS

- T7800
- T7700



DETAILS

- » (10) Lower Tool Protector

## STANDARD TIRE LEVER TOOL

## EAA0247G02A

COMPATIBLE MODELS

- All Tire Changers



DETAILS

## TIRE LEVER PROTECTIVE SLEEVE

## EAA0247G04A

COMPATIBLE MODELS

- EAA0247G02A



DETAILS

- » Black plastic protector for standard tire lever tool

## WAVE PLUS TIRE LEVER

## EAC0097G47A

COMPATIBLE MODELS

- All Tire Changers



DETAILS

- » Specially shaped lever for hard tire beads

## WAVE LEVER SLEEVE

## EAC0115G06A

COMPATIBLE MODELS

- EAC0097G47A



DETAILS

- » Black plastic protector for wave tire lever tool

## PNEUMATIC BEAD ASSIST (MH320)

## EAA0329G34B

COMPATIBLE MODELS

- System V / T5745T
- System IV



DETAILS

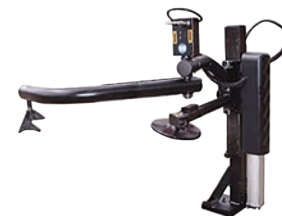
- » Helps mounting/demounting stiff sidewalls and low profile tires

## PNEUMATIC BEAD ASSIST (MH310)

## EAA0329G33B

COMPATIBLE MODELS

- System III / T1545T
- System II



DETAILS

- » Helps mounting/demounting stiff sidewalls and low profile tires

## ROD WITH ROLLER

## EAA0332G32A

COMPATIBLE MODELS

- EAA0329G35B - MH320



DETAILS

- » Rod with roller attachment
- » Helps upper bead mounting
- » Conical Roller EAM0046G46A
- » Optional for Bead Assist EAA0329G35B

## HEX BAR WITH ROLLER

## EAA0329G92A

COMPATIBLE MODELS

- EAA0329G35B - MH320



DETAILS

- » Hex Bar with roller attachment
- » Helps upper bead mounting
- » Roller EAM0032G96A
- » Optional for Bead Assist EAA0329G36B

**ROLLER MOUNTING HELP TOOL****EAA0304G48A**

## COMPATIBLE MODELS

- T7100
- System V / T5745T
- System IV
- System III / T1545T
- System II



## DETAILS

- » Bead depressing roller for high-performance, low-profile tires

**WHEEL DEPRESSOR TOOL EXTENSION****ST4026913**

## COMPATIBLE MODELS

- Any Model with Pneumatic Bead Assist



## DETAILS

- » Needed when pressing down deep reversed wheels during clamping

**BEAD CLAMP****EAA0358G85A**

## COMPATIBLE MODELS

- All Tire Changers



## DETAILS

- » Helps upper bead mounting, especially on low-profile and stiff tires

**BEAD CLAMP****EAA0247G70A**

## COMPATIBLE MODELS

- All Tire Changers



## DETAILS

- » Helps upper bead mounting, especially on low-profile and stiff tires

**PLASTIC RIM PROTECTOR****EAA0304G52A**

## COMPATIBLE MODELS

- All Tire Changers



## DETAILS

- » Clip-on type
- » Set of 3

**RIM PROTECTOR****EAA0408G33A**

## COMPATIBLE MODELS

- All Tire Changers



## DETAILS

- » Clip-on type
- » Protect the rim from scratch

**SMART BEAD SPACER****EAA0377G23A**

## COMPATIBLE MODELS

- All Tire Changers



## DETAILS

- » Holds the tire bead at multiple points in the drop center during tire mounting

**LUBE BUCKET****8-03229A**

## COMPATIBLE MODELS

- All Tire Changers



## DETAILS

- » 7.5 lbs. Lube Bucket

## LUBE BOTTLE

00066006000

COMPATIBLE MODELS

- System V / T5745T
- System IV
- System III / T1545T
- System II



DETAILS

## TIRE LUBE SWAB

01267267000

COMPATIBLE MODELS

- System V / T5745T
- System IV
- System III / T1545T
- System II



DETAILS

## LUBE BRUSH

5-14126A

COMPATIBLE MODELS

- All Tire Changers



DETAILS

## LUBE BRUSH

EAA0304G16A

COMPATIBLE MODELS

- All Tire Changers



DETAILS

## STEEL MOUNT/DEMOUNT HEAD

EAA0329G95A

COMPATIBLE MODELS

- T7100
- System V / T5745T
- System IV
- System III / T1545T
- System II



DETAILS

» Steel mount/demount head

## QUICK EXCHANGE DEVICE AND MOUNTING HEAD

EAA0304G66A

COMPATIBLE MODELS

- T7100
- System V / T5745T
- System IV
- System III / T1545T
- System II



DETAILS

» For changing between plastic and steel mount/demount heads

## PLASTIC MOUNT/DEMOUNT HEAD KIT

EAA0247G20A

COMPATIBLE MODELS

- T7100
- System V / T5745T
- System IV
- System III / T1545T
- System II



DETAILS

» Includes replacement plastic head and mounting brackets

## REPLACEMENT PLASTIC MOUNT/DEMOUNT HEAD

EAM0043G71A

COMPATIBLE MODELS

- T7100
- System V / T5745T
- System IV
- System III / T1545T
- System II



DETAILS

» Replacement plastic mount/demount head



## QUICK EXCHANGE DEVICE AND MOUNTING HEAD

**EAK0341G66A**

COMPATIBLE MODELS

- All Swing Arm Tire Changers



DETAILS

- » Swing Arm models

## PLASTIC MOUNT/DEMOUNT HEAD AND SUPPORT

**EAA0503G62A**

COMPATIBLE MODELS

- All Swing Arm Tire Changers



DETAILS

- » Swing Arm models

## REPLACEMENT PLASTIC MOUNT/DEMOUNT HEAD

**EAM0169G90A**

COMPATIBLE MODELS

- All Swing Arm Tire Changers



DETAILS

- » Swing Arm models

## QUICK EXCHANGE DEVICE AND MOUNTING HEAD

**EAA0304G67A**

COMPATIBLE MODELS

- T7100
- System V / T5745T
- System IV
- System III / T1545T
- System II



DETAILS

- » For Audi, Ford, Honda, VW, Peugeot and other wheels with protruding spokes

## PLASTIC MOUNT/DEMOUNT HEAD KIT

**EAA0304G37A**

COMPATIBLE MODELS

- T7100
- System V / T5745T
- System IV
- System III / T1545T
- System II



DETAILS

- » For Audi, Ford, Honda, VW, Peugeot and other wheels with protruding spokes

## REPLACEMENT PLASTIC MOUNT/DEMOUNT HEAD

**EAM0043G70A**

COMPATIBLE MODELS

- T7100
- System V / T5745T
- System IV
- System III / T1545T
- System II



DETAILS

- » For Audi, Ford, Honda, VW, Peugeot and other wheels with protruding spokes

## OFFSET MOUNT/DEMOUNT HEAD KIT

**EAA0304G80A**

COMPATIBLE MODELS

- System V / T5745T



DETAILS

- » Includes Quick Exchange Device
- » Must be used with the Sliding Jaw Kit EAA0331G91A
- » Provides extended wheel diameter range

## QUICK EXCHANGE DEVICE ADAPTER

**EAA0329G27A**

COMPATIBLE MODELS

- T7100
- System V / T5745T
- System IV
- System III / T1545T
- System II



DETAILS

- » For use by adding additional mounting head
- » Requires Quick Exchange Kit EAA0304G66A or EAA0304G67A

## PROTECTIVE KIT FOR MOUNT/DEMOUNT HEAD

## EAA0372G24A

COMPATIBLE MODELS

- T7100
- System V / T5745T
- System IV
- System III / T1545T
- System II



## DETAILS

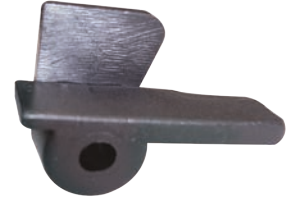
- » Insert for mount/demount head
- » Plastic rim protector

## PROTECTIVE INSERT FOR MOUNT/DEMOUNT HEAD

## EAC0078G50A

COMPATIBLE MODELS

- T7100
- System V / T5745T
- System IV
- System III / T1545T
- System II



## DETAILS

- » Insert for mount/demount head

## PROTECTIVE INSERT FOR MOUNT/DEMOUNT HEAD

## EAC0113G61A

COMPATIBLE MODELS

- T7100
- System V / T5745T
- System IV
- System III / T1545T
- System II



## DETAILS

- » Screws Part #: 1-54410A
- » Pack of 5 EAK0315G48A

## PLASTIC RIM PROTECTOR FOR MOUNT/DEMOUNT HEAD

## EAC0078G13A

COMPATIBLE MODELS

- T7100
- System V / T5745T
- System IV
- System III / T1545T
- System II



## DETAILS

- » Plastic rim protector

## LIGHT TRUCK JAW ADAPTERS

## EAA0304G32A

COMPATIBLE MODELS

- System V / T5745T
- System IV
- System III / T1545T
- System II



## DETAILS

- » Clamping jaws for light truck wheels
- » Fits on center-type sliding jaw turntables

## 8" ATV &amp; MOTORCYCLE ADAPTERS

## EAA0329G53A

COMPATIBLE MODELS

- System V / T5745T
- System IV
- System III / T1545T
- System II



## DETAILS

- » Fits on center-type, sliding jaw turntables
- » Can clamp 8" ATV and motorcycle wheels up to 23"
- » \*System V/T5745T can clamp 10" ATV wheels

## LIGHT TRUCK JAW ADAPTERS

## EAA0351G95A

COMPATIBLE MODELS

- System II



## DETAILS

- » For fixed center jaws

## 8" ATV ADAPTERS

## EAA0410G87A

COMPATIBLE MODELS

- System II



## DETAILS

- » For fixed center jaws
- » For ATV wheels

**MOTORCYCLE JAWS**

**EAA0351G92A**

COMPATIBLE MODELS

- System II



DETAILS

- » For non-adjustable fixed center jaws to clamp motorcycle wheel
- » Plastic protector for jaw ST0029617
- » Screw (1 piece) 1-17609A

**4" EXTENSION FOR ADJUSTABLE JAWS**

**EAA0331G91A**

COMPATIBLE MODELS

- System V / T5745T
- System IV
- System III / T1545T
- System II



DETAILS

- » Add 4" capability when clamping rims from outside

**PLASTIC JAW PROTECTOR**

**ST0029617**

COMPATIBLE MODELS

- System V / T5745T
- System IV
- System III / T1545T
- System II



DETAILS

- » Screw ST7205129
- » Bushing ST0013524
- » For EAA0329G53A

**FRONT LIGHT ALLOY RIM PROTECTORS**

**EAA0351G90A**

COMPATIBLE MODELS

- System II



DETAILS

**+6" ADAPTERS**

**EAA0351G93A**

COMPATIBLE MODELS

- System II



DETAILS

- » For non-adjustable fixed center jaws
- » Adds diameter capacity

**PLASTIC JAW PROTECTOR**

**EAK0329G86A**

COMPATIBLE MODELS

- System V / T5745T
- System IV
- System III / T1545T
- System II



DETAILS

- » Plastic protectors and screws
- » Jaws with 15 cleats
- » Screws 1-36109A2
- » EAC0113G47A for 1 piece
- » EAA0408G24A for rear protectors

**PLASTIC JAW PROTECTOR**

**EAA0304G21A**

COMPATIBLE MODELS

- System V / T5745T
- System IV
- System III / T1545T
- System II



DETAILS

- » Jaws with 6 cleats
- » EAK0237J19A for kit of 4
- » 1-36306A for M5x10 screws

**FRONT/REAR LIGHT ALLOY RIM PROTECTORS**

**EAA0351G91A**

COMPATIBLE MODELS

- System II



DETAILS

**JAW INSERT PROTECTION****EAC0087G48A**

COMPATIBLE MODELS

- All tire changers with sliding jaws



## DETAILS

- » For use on jaws with 6 cleats only

**LASER KIT****EAA0356G19A**

COMPATIBLE MODELS

- System V / T5745T
- System IV



## DETAILS

- » Identifying tool head placement for safe tire removal

**TOOL STORAGE****EAA0481G79A**

COMPATIBLE MODELS

- T7800
- T7700



## DETAILS

**CLAMPING JAWS**

**EAA0347G43A**

COMPATIBLE MODELS

- T8058



DETAILS

» For Alloy Wheels (Set of 4)

**MOUNTING ROLL**

**ST4022287**

COMPATIBLE MODELS

- T8056
- T8026



DETAILS

» For Tubeless Tires

**JAW EXTENSIONS**

**ST4019161**

COMPATIBLE MODELS

- T8058



DETAILS

» Increases clamping range 44"-56"

**PROTECTIVE ALLOY JAWS**

**ST4008264**

COMPATIBLE MODELS

- T8056



DETAILS

**LONG TIRE LEVER**

**ST4004461**

COMPATIBLE MODELS

- T8058
- T8056
- T8026



DETAILS

**OTR EXTENSION**

**ST4007611**

COMPATIBLE MODELS

- T8058



DETAILS

» For Split-Ring Wheels

**CLAMP**

**EAA0329G05A**

COMPATIBLE MODELS

- T8058
- T8056
- T8026



DETAILS

» For Alloy Wheels

**JAW EXTENSIONS**

**ST4024715**

COMPATIBLE MODELS

- T8056



DETAILS

» Increases clamping range 32"-56"

**BEAD PUSHING LEVER**

**ST4002354**

COMPATIBLE MODELS

- T8058
- T8056



DETAILS



Snap-on® Total Shop Solutions (TSS) offers a wide range of equipment solutions for workshops, garages, car dealers, and tire shops, thanks to the specific solutions provided by its portfolio of premium brands. As a brand of TSS, John Bean is committed to providing innovative and reliable wheel solutions to the auto repair industry. Therefore, specifications listed in this sell sheet may change without notice. ©2023 Snap-on Incorporated. John Bean is a trademark, registered in the United States and other countries, of Snap-on Incorporated. All rights reserved. All other marks are marks of their respective holders. ss153523d (NA\_en) 06/2023

