



TIRE CHANGER

ACCESSORY
CATALOG

INDEX

▶ PRECISION TOOLING KITS	3
▶ REDUCTION CONES	4
▶ BEAD BREAKING	4-5
▶ TIRE LEVERS	6
▶ TIRE MOUNTING	6-8
▶ M/D HEADS & ACCESSORIES	8-10
▶ CLAMPING ADAPTERS & PROTECTORS	10-12
▶ ACCESSORIES	12
▶ HEAVY-DUTY	13

UNIVERSAL REVERSE MOUNT WHEEL KIT

EAA0364G00A

COMPATIBLE MODELS

- T7800
- T7700
- T7200 / T7100



DETAILS

- » (5) Cylindrical pins 24mm
- » (5) Conical pins 24mm
- » Used with small steel cone EAM0003J05A
- » Replacement Bolt 2401414
- » Replacement Knob C0028

CYLINDRICAL PIN

3003777

COMPATIBLE MODELS

- EAA0364G00A
- EAA0351G60A



DETAILS

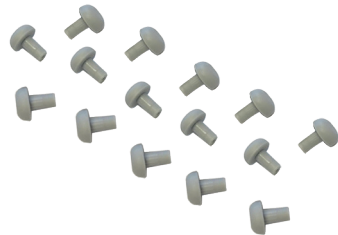
- » Replacement pin 24mm for reverse mount wheel kit
- » 89mm length

PLASTIC PIN CAPS

EAK0375G50A

COMPATIBLE MODELS

- EAA0364G00A
- EAA0351G60A



DETAILS

- » (15) Plastic pin caps for reverse-mount wheel kit

LIGHT TRUCK WHEEL KIT

EAA0351G29A

COMPATIBLE MODELS

- T7800
- T7700
- T7200 / T7100



DETAILS

- » Cone Ø 118-173mm EAM0067G48A
- » Spacer 50mm height EAA0350G77A

CONICAL PINS

EAA0440G50A

COMPATIBLE MODELS

- EAA0351G60A
- EAA0364G00A



DETAILS

- » Set of 5 pins
- » 19mm diameter
- » 110mm length

CONICAL PIN

3003776

COMPATIBLE MODELS

- EAA0364G00A
- EAA0351G60A



DETAILS

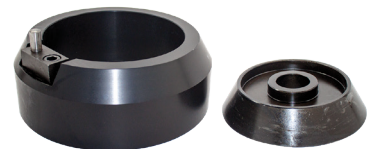
- » Replacement pin 24mm for reverse mount wheel kit
- » 78mm length

LIGHT TRUCK WHEEL KIT

EAA0349G06A

COMPATIBLE MODELS

- T7800
- T7700
- T7200 / T7100



DETAILS

- » Cone Ø 135-175mm EAM0042G77A
- » Spacer 85mm height EAA0345G69A

REDUCTION CONE

EAM0058G12A

COMPATIBLE MODELS

- T7800
- T7700
- T7200 / T7100



DETAILS

- » Cone Ø 64mm

REDUCTION CONE

EAM0058G07A

COMPATIBLE MODELS

- T7800
- T7700
- T7200 / T7100



DETAILS

- » Cone Ø 78mm

REDUCTION CONE

EAC0099G40A

COMPATIBLE MODELS

- T7800
- T7700
- T7200 / T7100



DETAILS

- » Cone Ø 120mm

REDUCTION CONE

EAC0102G25A

COMPATIBLE MODELS

- T7800
- T7700
- T7200 / T7100



DETAILS

- » Cone Ø 145mm

CONE KIT

EAK0317G32A

COMPATIBLE MODELS

- T7800
- T7700



DETAILS

- » Cone Ø 42-85mm
- » (1) Steel Cone EAM0117G47A
- » (3) Plastic Protectors EAC0100G66A

SPACER FOR BEAD BREAKER - 20MM

EAA0440G51A

COMPATIBLE MODELS

- All Tire Changers



DETAILS

- » 20mm Spacer

SPACER FOR BEAD BREAKER - 50MM

EAA0440G52A

COMPATIBLE MODELS

- All Tire Changers



DETAILS

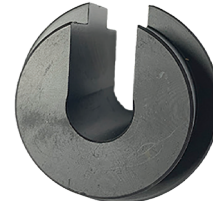
- » 50mm Spacer

SPACER FOR BEAD BREAKER - 70MM

EAA0440G53A

COMPATIBLE MODELS

- All Tire Changers



DETAILS

- » 70mm Spacer

POWERMONT™ UPPER PROTECTOR**EAK0341G32A**

COMPATIBLE MODELS

- T7800
- T7700



DETAILS

- » (10) Upper Tool Protector
- » EAK0330G57A for units manufactured before March 2019

POWERMONT™ LOWER PROTECTOR**EAK0330G58A**

COMPATIBLE MODELS

- T7800
- T7700



DETAILS

- » (10) Lower Tool Protector

BEAD BREAKER DISC**EAA0328G91A**

COMPATIBLE MODELS

- EAA0329G35B - MH320



DETAILS

- » Used only with Pneumatic Bead Assist
- » Used with Hex Bar EAA0329G92A

BEAD BREAKER BLADE PROTECTOR**EAA0304G15A**

COMPATIBLE MODELS

- All Rim Clamping Tire Changers



DETAILS

MOTORCYCLE BEAD BREAKER BLADE**EAA0247G14A**

COMPATIBLE MODELS

- System IV
- System III / T1545T
- System II



DETAILS

- » Narrower than standard blade
- » Slips on the bead breaker blade

SLIP-ON SHOE**EAA0329G74A**

COMPATIBLE MODELS

- System V / T5745T
- System IV
- System III / T1545T
- System II



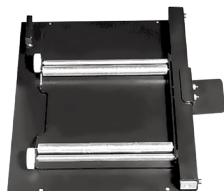
DETAILS

- » Reduces gap between bead breaker blade and rubber pad

ROLLER BOARD**EAA0304G51A**

COMPATIBLE MODELS

- System V / T5745T
- System IV
- System III / T1545T
- System II



DETAILS

- » Allows for easy rotation of the tire for positioning of breaking beads

COMPATIBLE MODELS

DETAILS

STANDARD TIRE LEVER TOOL

EAA0247G02A

COMPATIBLE MODELS

- All Tire Changers



DETAILS

TIRE LEVER PROTECTIVE SLEEVE

EAA0247G04A

COMPATIBLE MODELS

- EAA0247G02A



DETAILS

- » Black plastic protector for standard tire lever tool

WAVE PLUS TIRE LEVER

EAC0097G47A

COMPATIBLE MODELS

- All Tire Changers



DETAILS

- » Specially shaped lever for hard tire beads

WAVE LEVER SLEEVE

EAC0115G06A

COMPATIBLE MODELS

- EAC0097G47A



DETAILS

- » Black plastic protector for wave tire lever tool

PNEUMATIC BEAD ASSIST (MH320)

EAA0329G34B

COMPATIBLE MODELS

- System V / T5745T
- System IV



DETAILS

- » Helps mounting/demounting stiff sidewalls and low profile tires

PNEUMATIC BEAD ASSIST (MH310)

EAA0329G33B

COMPATIBLE MODELS

- System III / T1545T
- System II



DETAILS

- » Helps mounting/demounting stiff sidewalls and low profile tires

ROD WITH ROLLER

EAA0332G32A

COMPATIBLE MODELS

- EAA0329G35B - MH320



DETAILS

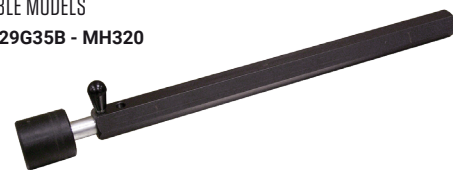
- » Rod with roller attachment
- » Helps upper bead mounting
- » Conical Roller EAM0046G46A
- » Optional for Bead Assist EAA0329G35B

HEX BAR WITH ROLLER

EAA0329G92A

COMPATIBLE MODELS

- EAA0329G35B - MH320



DETAILS

- » Hex Bar with roller attachment
- » Helps upper bead mounting
- » Roller EAM0032G96A
- » Optional for Bead Assist EAA0329G36B

ROLLER MOUNTING HELP TOOL**EAA0304G48A**

COMPATIBLE MODELS

- T7200 / T7100
- System V / T5745T
- System IV
- System III / T1545T
- System II



DETAILS

- » Bead depressing roller for high-performance, low-profile tires

WHEEL DEPRESSOR TOOL EXTENSION**ST4026913**

COMPATIBLE MODELS

- Any Model with Pneumatic Bead Assist



DETAILS

- » Needed when pressing down deep reversed wheels during clamping

BEAD CLAMP**EAA0358G85A**

COMPATIBLE MODELS

- All Tire Changers



DETAILS

- » Helps upper bead mounting, especially on low-profile and stiff tires

BEAD CLAMP**EAA0247G70A**

COMPATIBLE MODELS

- All Tire Changers



DETAILS

- » Helps upper bead mounting, especially on low-profile and stiff tires

PLASTIC RIM PROTECTOR**EAA0304G52A**

COMPATIBLE MODELS

- All Tire Changers



DETAILS

- » Clip-on type
- » Set of 3

RIM PROTECTOR**EAA0408G33A**

COMPATIBLE MODELS

- All Tire Changers



DETAILS

- » Clip-on type
- » Protect the rim from scratch

SMART BEAD SPACER**EAA0377G23A**

COMPATIBLE MODELS

- All Tire Changers



DETAILS

- » Holds the tire bead at multiple points in the drop center during tire mounting

LUBE BUCKET**8-03229A**

COMPATIBLE MODELS

- All Tire Changers



DETAILS

- » 7.5 lbs. Lube Bucket

LUBE BOTTLE

00066006000

COMPATIBLE MODELS

- System V / T5745T
- System IV
- System III / T1545T
- System II



DETAILS

TIRE LUBE SWAB

01267267000

COMPATIBLE MODELS

- System V / T5745T
- System IV
- System III / T1545T
- System II



DETAILS

LUBE BRUSH

5-14126A

COMPATIBLE MODELS

- All Tire Changers



DETAILS

LUBE BRUSH

EAA0304G16A

COMPATIBLE MODELS

- All Tire Changers



DETAILS

STEEL MOUNT/DEMOUNT HEAD

EAA0329G95A

COMPATIBLE MODELS

- T7200 / T7100
- System V / T5745T
- System IV
- System III / T1545T
- System II



DETAILS

» Steel mount/demount head

QUICK EXCHANGE DEVICE AND MOUNTING HEAD

EAA0304G66A

COMPATIBLE MODELS

- T7200 / T7100
- System V / T5745T
- System IV
- System III / T1545T
- System II



DETAILS

» For changing between plastic and steel mount/demount heads

PLASTIC MOUNT/DEMOUNT HEAD KIT

EAA0247G20A

COMPATIBLE MODELS

- T7200 / T7100
- System V / T5745T
- System IV
- System III / T1545T
- System II



DETAILS

» Includes replacement plastic head and mounting brackets

REPLACEMENT PLASTIC MOUNT/DEMOUNT HEAD

EAM0043G71A

COMPATIBLE MODELS

- T7200 / T7100
- System V / T5745T
- System IV
- System III / T1545T
- System II



DETAILS

» Replacement plastic mount/demount head

QUICK EXCHANGE DEVICE AND MOUNTING HEAD

EAK0341G66A

COMPATIBLE MODELS

- All Swing Arm Tire Changers



DETAILS

- » Swing Arm models

PLASTIC MOUNT/DEMOUNT HEAD AND SUPPORT

EAA0503G62A

COMPATIBLE MODELS

- All Swing Arm Tire Changers



DETAILS

- » Swing Arm models

REPLACEMENT PLASTIC MOUNT/DEMOUNT HEAD

EAM0169G90A

COMPATIBLE MODELS

- All Swing Arm Tire Changers



DETAILS

- » Swing Arm models

QUICK EXCHANGE DEVICE AND MOUNTING HEAD

EAA0304G67A

COMPATIBLE MODELS

- T7200 / T7100
- System V / T5745T
- System IV
- System III / T1545T
- System II



DETAILS

- » For Audi, Ford, Honda, VW, Peugeot and other wheels with protruding spokes

PLASTIC MOUNT/DEMOUNT HEAD KIT

EAA0304G37A

COMPATIBLE MODELS

- T7200 / T7100
- System V / T5745T
- System IV
- System III / T1545T
- System II



DETAILS

- » For Audi, Ford, Honda, VW, Peugeot and other wheels with protruding spokes

REPLACEMENT PLASTIC MOUNT/DEMOUNT HEAD

EAM0043G70A

COMPATIBLE MODELS

- T7200 / T7100
- System V / T5745T
- System IV
- System III / T1545T
- System II



DETAILS

- » For Audi, Ford, Honda, VW, Peugeot and other wheels with protruding spokes

OFFSET MOUNT/DEMOUNT HEAD KIT

EAA0304G80A

COMPATIBLE MODELS

- System V / T5745T



DETAILS

- » Includes Quick Exchange Device
- » Must be used with the Sliding Jaw Kit EAA0331G91A
- » Provides extended wheel diameter range

QUICK EXCHANGE DEVICE ADAPTER

EAA0329G27A

COMPATIBLE MODELS

- T7200 / T7100
- System V / T5745T
- System IV
- System III / T1545T
- System II



DETAILS

- » For use by adding additional mounting head
- » Requires Quick Exchange Kit EAA0304G66A or EAA0304G67A

PROTECTIVE KIT FOR MOUNT/DEMOUNT HEAD

EAA0372G24A

COMPATIBLE MODELS

- T7200 / T7100
- System V / T5745T
- System IV
- System III / T1545T
- System II



DETAILS

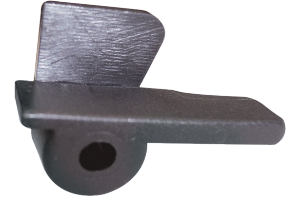
- » Insert for mount/demount head
- » Plastic rim protector

PROTECTIVE INSERT FOR MOUNT/DEMOUNT HEAD

EAC0078G50A

COMPATIBLE MODELS

- T7200 / T7100
- System V / T5745T
- System IV
- System III / T1545T
- System II



DETAILS

- » Insert for mount/demount head

PROTECTIVE INSERT FOR MOUNT/DEMOUNT HEAD

EAC0113G61A

COMPATIBLE MODELS

- T7200 / T7100
- System V / T5745T
- System IV
- System III / T1545T
- System II



DETAILS

- » Screws Part #: 1-54410A
- » Pack of 5 EAK0315G48A

PLASTIC RIM PROTECTOR FOR MOUNT/DEMOUNT HEAD

EAC0078G13A

COMPATIBLE MODELS

- T7200 / T7100
- System V / T5745T
- System IV
- System III / T1545T
- System II



DETAILS

- » Plastic rim protector

LIGHT TRUCK JAW ADAPTERS

EAA0304G32A

COMPATIBLE MODELS

- System V / T5745T
- System IV
- System III / T1545T
- System II



DETAILS

- » Clamping jaws for light truck wheels
- » Fits on center-type sliding jaw turntables

8" ATV & MOTORCYCLE ADAPTERS

EAK0375G48A

COMPATIBLE MODELS

- System V / T5745T
- System IV
- System III / T1545T
- System II



DETAILS

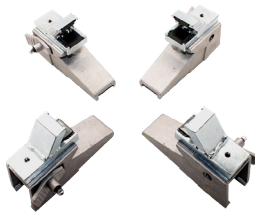
- » Compatible with Harley Davidson Panamera
- » Fits on center-type, sliding jaw turntables
- » Can clamp 8" ATV and motorcycle wheels up to 23"
- » *System V/T5745T can clamp 10" ATV wheels

LIGHT TRUCK JAW ADAPTERS

EAA0351G95A

COMPATIBLE MODELS

- System II



DETAILS

- » For fixed center jaws

8" ATV ADAPTERS

EAA0410G87A

COMPATIBLE MODELS

- System II



DETAILS

- » For fixed center jaws
- » For ATV wheels

MOTORCYCLE JAWS

EAK0375G47A

COMPATIBLE MODELS

- System II



DETAILS

- » Compatible with Harley Davidson Panamera
- » For non-adjustable fixed center jaws to clamp motorcycle wheel
- » Plastic protector for jaw EAC0127G54A
- » Screw (1 piece) 1-17609A

4" EXTENSION FOR ADJUSTABLE JAWS

EAA0331G91A

COMPATIBLE MODELS

- System V / T5745T
- System IV
- System III / T1545T
- System II



DETAILS

- » Add 4" capability when clamping rims from outside

PLASTIC JAW PROTECTOR

ST0029617

COMPATIBLE MODELS

- EAA0329G53A
- EAA0410G87A
- EAA0351G92A



DETAILS

- » Screw ST7205129
- » Bushing ST0013524

PLASTIC JAW PROTECTOR

EAA0304G21A

COMPATIBLE MODELS

- System V / T5745T
- System IV
- System III / T1545T
- System II



DETAILS

- » Jaws with 6 cleats
- » EAK0237J19A for kit of 4
- » 1-36306A for M5x10 screws

+6" ADAPTERS

EAA0351G93A

COMPATIBLE MODELS

- System II



DETAILS

- » For non-adjustable fixed center jaws
- » Adds diameter capacity

PLASTIC JAW PROTECTOR

EAK0329G86A

COMPATIBLE MODELS

- System V / T5745T
- System IV
- System III / T1545T
- System II



DETAILS

- » Plastic protectors and screws
- » Jaws with 15 cleats
- » Screws 1-36109A2
- » EAC0113G47A for 1 piece
- » EAA0408G24A for rear protectors

PLASTIC JAW PROTECTOR

EAC0127G54A

COMPATIBLE MODELS

- EAK0375G48A
- EAK0375G47A



DETAILS

- » Screw ST7205129
- » Bushing ST0013524

FRONT LIGHT ALLOY RIM PROTECTORS

EAA0351G90A

COMPATIBLE MODELS

- System II



DETAILS

FRONT/REAR LIGHT ALLOY RIM PROTECTORS

EAA0351G91A

COMPATIBLE MODELS

- System II



DETAILS

JAW INSERT PROTECTION

EAC0087G48A

COMPATIBLE MODELS

- All tire changers with sliding jaws



DETAILS

- » For use on jaws with 6 cleats only

LASER KIT

EAA0356G19A

COMPATIBLE MODELS

- System V / T5745T
- System IV



DETAILS

- » Identifying tool head placement for safe tire removal

TOOL STORAGE

EAA0481G79A

COMPATIBLE MODELS

- T7800
- T7700



DETAILS

CLAMPING JAWS

EAA0347G43A

COMPATIBLE MODELS

- T8058



DETAILS

» For Alloy Wheels (Set of 4)

MOUNTING ROLL

ST4022287

COMPATIBLE MODELS

- T8056
- T8026



DETAILS

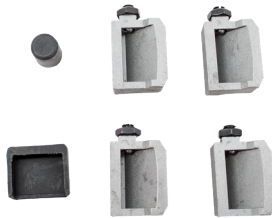
» For Tubeless Tires

PROTECTIVE ALLOY JAWS

ST4008264

COMPATIBLE MODELS

- T8056



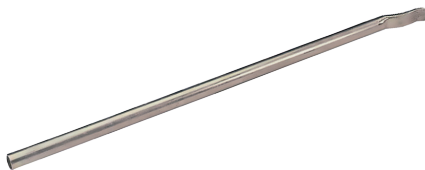
DETAILS

LONG TIRE LEVER

ST4004461

COMPATIBLE MODELS

- T8058
- T8056
- T8026



DETAILS

OTR EXTENSION

ST4007611

COMPATIBLE MODELS

- T8058



DETAILS

» For Split-Ring Wheels

CLAMP

EAA0329G05A

COMPATIBLE MODELS

- T8058
- T8056
- T8026



DETAILS

» For Alloy Wheels

JAW EXTENSIONS

ST4024715

COMPATIBLE MODELS

- T8056



DETAILS

» Increases clamping range 32"-56"

BEAD PUSHING LEVER

ST4002354

COMPATIBLE MODELS

- T8058
- T8056



DETAILS



Snap-on® Total Shop Solutions (TSS) offers a wide range of equipment solutions for workshops, garages, car dealers, and tire shops, thanks to the specific solutions provided by its portfolio of premium brands. As a brand of TSS, John Bean is committed to providing innovative and reliable wheel solutions to the auto repair industry. Therefore, specifications listed in this sell sheet may change without notice. ©2023 Snap-on Incorporated. John Bean is a trademark, registered in the United States and other countries, of Snap-on Incorporated. All rights reserved. All other marks are marks of their respective holders. ss153523e (NA_en) 12/2023

