

Be **PRECISE**



# V3400

WIRELESS  
DRIVE-THROUGH  
WHEEL ALIGNMENT SYSTEM

**JohnBean**

# V3400

## PRECISE ALIGNMENT FLEXIBLE INSTALLATION

If you're looking for the ultimate in precision with a high degree of mobility and installation flexibility, look no further than the John Bean® V3400 wheel alignment machine.

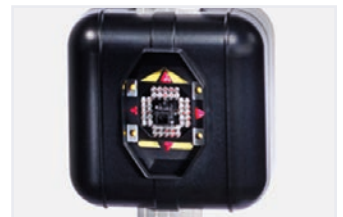
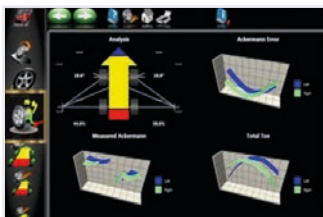
The V3400 utilises a drive-through design with fully wireless Bluetooth® connected camera towers for easy installation in various bay types, especially when paired with the optional mobility kit.

Automatic camera tracking eliminates the need to readjust the camera after raising the lift, while a continuously calibrating third camera retains ultimate accuracy.

Touchless AC400 clamps accommodate a full range of tyre sizes and ensure a safe, damage-free attachment without touching the rim while applying limited clamping force. Each step in the alignment procedure has been carefully designed to provide the ultimate precision for every adjustment. Our advanced software features enable technicians to perform specialised vehicle measurements such as scrub radius, caster trail, pro-Ackerman, and more, making the V3400 ideal for top-tier precision and convenience in wheel alignment.



## WIRELESS DRIVE-THROUGH WHEEL ALIGNMENT SYSTEM



### ADVANCED MEASUREMENTS

Measurements designed for advanced suspension troubleshooting and modified suspensions. Includes advanced ride height entry, pro-Ackerman, graphical caster trail, scrub radius and SAI.

### MODIFIED VEHICLES

Ensure accurate alignment for vehicles that have modified OEM specifications with our advanced alignment software that allows for effortless changes in procedure flow.

### OEM PROCEDURES

The software provides the recommended procedures defined by the manufacturer and indicates the correct clamps for an accurate OEM-specified wheel alignment.

### VODI™

Our exclusive Vehicle Orientation Directional Indicator (VODI) guides technicians through the measurement process when the monitor is not in view, with simple, easy-to-follow red and green LED lighting; reducing the amount of time spent walking back and forth from the vehicle to the aligner.

*WHEN GOOD ENOUGH ISN'T ENOUGH, JB.*

# MAXIMUM MOBILITY ABSOLUTE ACCURACY

Be **PRECISE**

## AUTOMATIC CAMERA TRACKING

Cameras move automatically up and down following the targets, eliminating manual adjustments of the camera beam.

## MOBILITY KIT

The optional mobility kit allows for easy relocation of the XD camera alignment towers within the shop, giving the ability to move between bays or out of the way, as needed.

## DRIVE-THROUGH DESIGN

The dual-tower design can accommodate larger-width vehicles by allowing the technician to position the towers apart at optimal distances. This also leaves space at the front of the vehicle to perform other tasks such as ADAS recalibration.

## AC400 CLAMPS

The clamp attaches to the tyre with optimal force without touching the rim; ensuring a safe, fast, and consistent clamping experience.



## RIDE HEIGHT

Ensure optimal precision even on modified vehicles with optional ride height targets that eliminate the need for manual data entry.

## EZ-TOE

Our advanced software makes it easy to quickly and accurately measure toe angle, allowing technicians to turn the wheel to access challenging adjustment points without using a steering wheel holder.

## AUDIT MODE

Uncover extra service opportunities with precise, and fast alignment audit reports. This report includes measurement of track width, front and rear toe, camber, wheelbase, wheel diameter, and cross dimensions.

## CUSTOMISABLE ALIGNMENT PROCEDURES

Easily modify alignment procedure flow by selecting the steps needed to perfectly meet the exact needs of your shop.

**JohnBean**



# V3400

## TECHNICAL SPECIFICATIONS

<b>Tyre Diameter (AC400)</b>	19"-39"   48-99cm
<b>Wheel Diameter (AC100)</b>	11"-22"   28-56cm
<b>Track Width</b>	48"-96"   122-244cm
<b>Wheelbase</b>	79"-180"   201-457cm
<b>Power Supply</b>	110-240V 50/60Hz

## STANDARD ACCESSORIES

- AC400 Clamps
- 2x Wheel Chock
- Steering Wheel Holder
- Brake Pedal Depressor
- Printer
- VIN Scanner

## OPTIONAL ACCESSORIES

- AC100 Clamps
- Mobility Kit
- Quick Clamp Kit
- 4" Extension Kit
- 2" Wheel Hub Extension

FIND A DISTRIBUTOR



**AUSTRIA**  
+49 2641 24 5 24

**FRANCE**  
+33 134 48 58 78

**GERMANY**  
+49 8634 622 0

**ITALY**  
+39 0522 733 411

Snap-on® Total Shop Solutions offers a wide range of garage equipment solutions for workshops, garages, car dealers, and tyre shops, thanks to the specific solutions provided by its portfolio of premium brands. John Bean is a brand of TSS and is committed to product innovation and improvement. Therefore, specifications listed in this sell sheet may change without notice. ©2023 Snap-on Incorporated. John Bean is a trademark, registered in the United States and other countries, of Snap-on Incorporated. All rights reserved. All other marks are marks of their respective holders. sswa22092 (EU en) 03/2023

