

WHEEL ALIGNER



IMAGING WHEEL ALIGNMENT SYSTEMS

High-resolution imaging technology
delivers speed and accuracy

SERIES **V2300**

JohnBean

V2300

FULLY FEATURED, HIGHLY ACCURATE WHEEL ALIGNMENT SYSTEMS

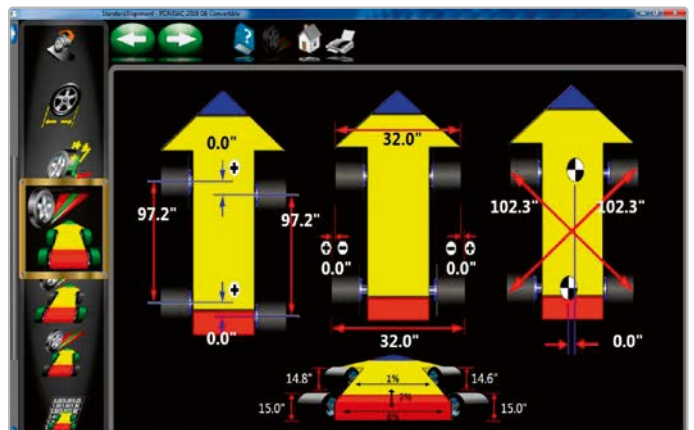
VERSATILE, ACCURATE HARDWARE

- High-resolution cameras produce accurate, live alignment readings and diagnostic data
- Passive front and rear XD targets improve durability with no electronics to damage
- Advanced XD targets and AC400 clamps are lightweight, durable and impact resistant

ADVANCED DIMENSIONING* WITH THE SOFTWARE PRO42 GOLD

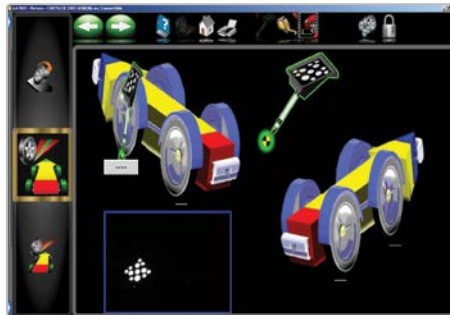
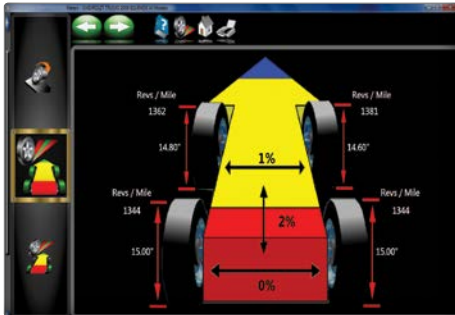
- Measurement of vehicle dimensions such as track width and wheel base as well as cross-diagonal measurement identify frame or structural damage.
- The wheels-off mode facilitates access to and adjustment of components otherwise difficult to reach.
- Rolling Radius* identifies mismatched tyre sizes - a potential cause of vehicle pulling and driver complaints

*Patented and/or patent-pending features



PROFESSIONAL SOLUTION FOR CUSTOMER SATISFACTION

Patented imaging technology provides accurate and real-time measurements that improve productivity. User-friendly features such as EZ-TOE*, VODI* and an extensive vehicle specification database deliver customer satisfaction, ease of use and accuracy.



AC400 CLAMPS WITH XD TARGETS

Weighing in at 3.13 kg (6.9 lbs) and measuring only 152 x 203 mm (6" x 8") in the front and rear, the AC400/XD package is the smallest and lightest we've ever made

RIDE HEIGHT* MEASUREMENT

Measure ride height and obtain proper alignment specs for those vehicles requiring it

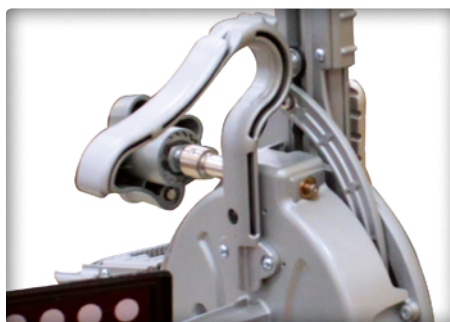
EZ-TOE*

Turn the front wheels and access difficult adjustment points while still displaying centred toe readings

USER-FRIENDLY INTERFACE

Use available step-by-step instructions as a guide for completing even the most complex tasks

AVAILABLE WITH THE JOHN BEAN AC400 NON-CONTACT ALIGNMENT WHEEL CLAMPS



SECURE CLAMPING WITHOUT TOUCHING THE RIM

- Only the tyre is contacted
- Clutch limited clamping force ensures accurate and repeatable results
- Durable and lightweight magnesium construction
- Alternatively, AC100 universal wheel clamps made of cast aluminum, with no limitation on tyre diameter

AC400: FAST AND EASY TO USE

- Clamping is accomplished with a single fast-action adjustment knob
- No accessories needed to accommodate the full range of tyre sizes
- Large, comfortable handle allows ergonomic use
- XD targets are lighter and take up less space than previous designs

MANUFACTURER SPECS

Extensive OEM specs allow quick and accurate vehicle selection

VODI™

Vehicle Orientation Directional Indicator* - guides the technician through the measurement process

HELPVIDEOS

View detailed videos of how to make needed adjustments to complete even the most complex tasks

*Patented and/or patent-pending features

SPECIFICATIONS AND ACCESSORIES

SPECIFICATIONS

Track width	121.9 cm - 243.8 cm
Wheel Base	200.7 cm - 457.2 cm
Shipping weight	227 kg
Power requirements	230 V 1ph 50-60 Hz

Specifications AC400

Tyre diameter	19" - 39" (48.3 cm - 99.1 cm)
Weight	3.13 kg
Clamping force	164.6 N
Construction	Cast magnesium

Specifications AC100

Rim clamping range	11" - 22"
Weight	4.9 to 5.2 kg
Construction	Cast aluminium

Standard accessories

Wheel clamps & targets
Steering wheel holder
Brake pedal depressor
Two wheel chocks
Colour printer

* Standard with V2300 AC100

** Standard with V2300 AC400

OPTIONAL ACCESSORIES

AC100 universal wheel clamp kit*:
EAK0320J36A

AC400 wheel clamp kit**:
EAK0320J35A

Drive-on camera aid:
EAK0289J91A

Mobility kit:
EAK0320J78A

Hub adaptor kit for wheels-off
alignment (AC100/AC400):
EAK0222J83B

AC100 universal wheel clamp
extension kit:
30926

AC400 dual wheel adaptor kit:
EAK0305J50A

Dual tall support kit:
EAK0289J80A

Centre tall support kit:
4031236

Dual short support kit:
EAK0289J81A

Centre short support kit:
4031234

Tilt camera beam:
4031154

EMEA-JA
Snap-on Equipment s.r.l. - Via Prov. Carpi, 33 - 42015 Correggio (RE)
Phone: +39 0522 733-411 - Fax: +39 0522 733-479 - www.johnbean-europe.com

Austria
Snap-on Equipment Austria GmbH - Hauptstrasse 24/Top 14 - A-2880 St. Corona/Wechsel (RE)
Phone: +43 1 865 97 84 - Fax: +43 1 865 97 84 29 - www.johnbean-europe.com

France
Snap-on Equipment France - ZA du Vert Galant - 15, rue de la Guivernone BP 97175
Saint-Ouen-l'Aumône - 95056 Cergy-Pontoise CEDEX
Phone: +33 134 48 58-78 - Fax: +33 134 48 58-70 - www.johnbean-france.fr

Germany
Snap-on Equipment GmbH - Konrad-Zuse-Straße 1 - 84579 Unterneukirchen
Phone: +49 8634 622-0 - Fax: +49 8634 5501 - www.johnbean-deutschland.com

Italy
Snap-on Equipment s.r.l. - Via Prov. Carpi, 33 - 42015 Correggio (RE)
Phone: +39 0522 733-411 - Fax: +39 0522 733-410 - www.johnbean-italia.com

United Kingdom
Snap-on Equipment Ltd. - Unit 17 Denney Road, King's Lynn - Norfolk PE30 4HG
Phone: +44 118 929-6811 - Fax: +44 118 966-4369 - www.snapon-equipment.co.uk

