

WHEEL ALIGNER



# 3D WHEEL ALIGNMENT

Easy-To-Use Alignment Solution

SERIES **VISUALINER 3D ELS**

**JohnBean**

# VISUALINER 3D ELS

## FAST, EASY-TO-USE, ACCURATE

Utilising patented imaging technology, the Visualiner 3D ELS provides accurate, real-time measurements - reducing set-up and measurement times while generating serious productivity benefits.

Matched with easy-to-use software, the John Bean Visualiner 3D ELS wheel aligner will have your technicians getting readings in a matter of minutes.



## THE VISUALINER 3D ELS WILL ENABLE YOU TO:

- ◊ Work at any height, eliminating the need of fixed positions to perform adjustments
- ◊ Generate more alignment business

## PRODUCTIVITY-ENHANCING FEATURES



### TILT CAMERA SYSTEM

- ◊ Tilt camera support shown with standard camera beam
- ◊ Eliminates the need for fixed-position/level surfaces during alignments
- ◊ Positions cameras in range with a touch of a button - even during the alignment process!



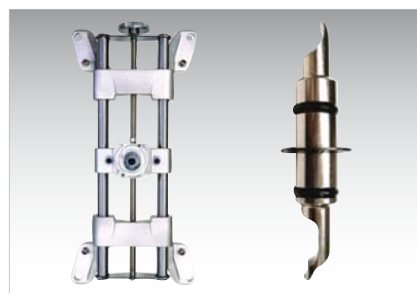
### VODI™

- ◊ Vehicle Orientation Directional Indicator, located on camera beam
- ◊ Guides technician through measuring process
- ◊ Reduces the amount of time spent walking back and forth from the vehicle to the aligner console



### 3D ANIMATION

- ◊ Provides vehicle-specific adjustment information with easy-to-understand 3D graphics
- ◊ Refers to spare parts or special tools as applicable



### UNIVERSAL WHEEL CLAMPS

- ◊ Handle wheel diameters ranging 11" - 22" standard (up to 26" with optional clamp extensions)
- ◊ Interchangeable grippers minimise wheel damage

## SPEED + ACCURACY = PROFITABILITY!

LESS TIME TO OBTAIN READINGS + REDUCED CORRECTION TIMES =  
FASTER, MORE ACCURATE ALIGNMENTS!



## MAKE ALIGNMENT YOUR MOST PROFITABLE SERVICE

The Visualiner 3D ELS leverages one of the most advanced imaging alignment systems available. The system creates a live, 3D model of the vehicle and tracks corrections as they happen. The Visualiner 3D ELS reduces set-up and adjustment times because it is:

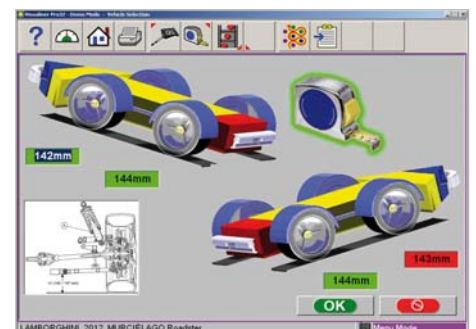
- Ergonomic: Measures at multiple lift heights.
- Adaptable: Works on non-level surfaces.
- Easy-to-use: Captures targets automatically.
- Fast: Shows progress in real-time.

By using the Visualiner 3D ELS, alignment will quickly become your most profitable service.



### ALL READINGS SCREEN

All measured values are presented on a large graphic 3D display to allow simple diagnostics of all alignment data.



### RIDE HEIGHT MEASUREMENT

Review vehicle specs and request input from the technician for those vehicles requiring ride height measurement.

# FEATURES AND SPECIFICATIONS

## FEATURES

- A-Arm Adjustments
- Advanced Customer Database with Backup/Restore
- Adjust Camber Only
- Adjustment Help Files
- Advanced Alignment Measurements with Reading/Specifications and Cross Values
- Aligner System Diagnostics
- Backup/Restore of Calibration and Setup Data
- Calibration History
- Caster and SAI Turntables
- Custom Vehicle Specifications
- Elevated Adjustments
- EZ-Toe
- EZ-Track Database
- 4-Wheel Steer Adjust
- FrameCheck™ Light Truck Frame Angle
- Front & Rear Camber (-15° to +15°)
- Front and Rear Toe
- Front Caster (-28° to +28°)
- Front/Rear/All/Zoom Readings
- Included Angle
- Individual Camber
- Individual Caster
- Individual Toe
- Initial/Final Color Print
- Integrated Help System (PDF)
- Light Truck Bushing
- Live Caster, Camber and Toe - Elevated
- Live Caster, Camber and Toe - Turntables
- Meter Screens
- Multiple Print Formats
- Multiple Units of Measure
- NorthStar Shim Program
- Rear Shim Programs
- Regional Specifications
- Remote Control (Optional)
- Ride Height
- SAI & Thrust Angle
- SAI Elevated
- 3D Animation
- Thrust Align Only
- Toe-Out-On-Turns
- Tools, Parts, and Adjustment Instructions
- 28 Languages
- 2-Wheel Alignment
- Tilt Camera System
- Vehicle Specs: 25+ Years
- Video Help



## SPECIFICATIONS

### Equipment Specifications

- Rim Size: 11" - 22"
- Tire Diameter: Unlimited
- Track Width: 122 x 244 cm
- Wheel Base: 200 x 457 cm
- Power Requirements: 230 V, 1Ph, 50/60 Hz

### Standard Accessories

- PC-in-Box Attached to Post
- Windows Operating System and Keyboard
- Geo Pro32 Value Software
- Vehicle Specs
- 19" TFT Wide-Screen Monitor
- Colour Printer A4
- 4 Targets (2 Front / 2 Rear)
- Tilt Camera Beam with 3D Sensor Technology
- Steering Wheel Holder
- Brake Pedal Depressor
- 4 Universal Wheel Clamps AC100
- 2 Rubber Wheel Chocks

### Optional Accessories

- Premium Turntables
- Paddle Kit
- Rollback Kit
- Roll Forward / Rollback Kit
- Universal Wheel Clamp Extension Kit
- Tyre Clamp Kit

**EMEA-JA**  
Snap-on Equipment s.r.l. - Via Prov. Carpi, 33 - 42015 Correggio (RE)  
Phone: +39 0522 733-411 - Fax: +39 0522 733-479 - www.johnbean-europe.com

**Austria**  
Snap-on Equipment Austria GmbH - Hauptstrasse 24/Top 14 - A-2880 St. Corona/Wechsel (RE)  
Phone: +43 1 865 97 84 - Fax: +43 1 865 97 84 29 - www.johnbean-europe.com

**France**  
Snap-on Equipment France - ZA du Vert Galant -15, rue de la Guivernone BP 97175  
Saint-Ouen-l'Aumône - 95056 Cergy-Pontoise CEDEX  
Phone: +33 134 48 58-78 - Fax: +33 134 48 58-70 - www.johnbean-france.fr

**Germany**  
Snap-on Equipment GmbH - Konrad-Zuse-Straße 1 - 84579 Unterneukirchen  
Phone: +49 8634 622-0 - Fax: +49 8634 5501 - www.johnbean-deutschland.com

**Italy**  
Snap-on Equipment s.r.l. - Via Prov. Carpi, 33 - 42015 Correggio (RE)  
Phone: +39 0522 733-411 - Fax: +39 0522 733-410 - www.johnbean-italia.com

**United Kingdom**  
Snap-on Equipment Ltd. - Unit 17 Denney Road, King's Lynn - Norfolk PE30 4HG  
Phone: +44 118 929-6811 - Fax: +44 118 966-4369 - www.snapon-equipment.co.uk

